

#169

# SURVEY FOR A. WATTENBERG & E.M. HAYS

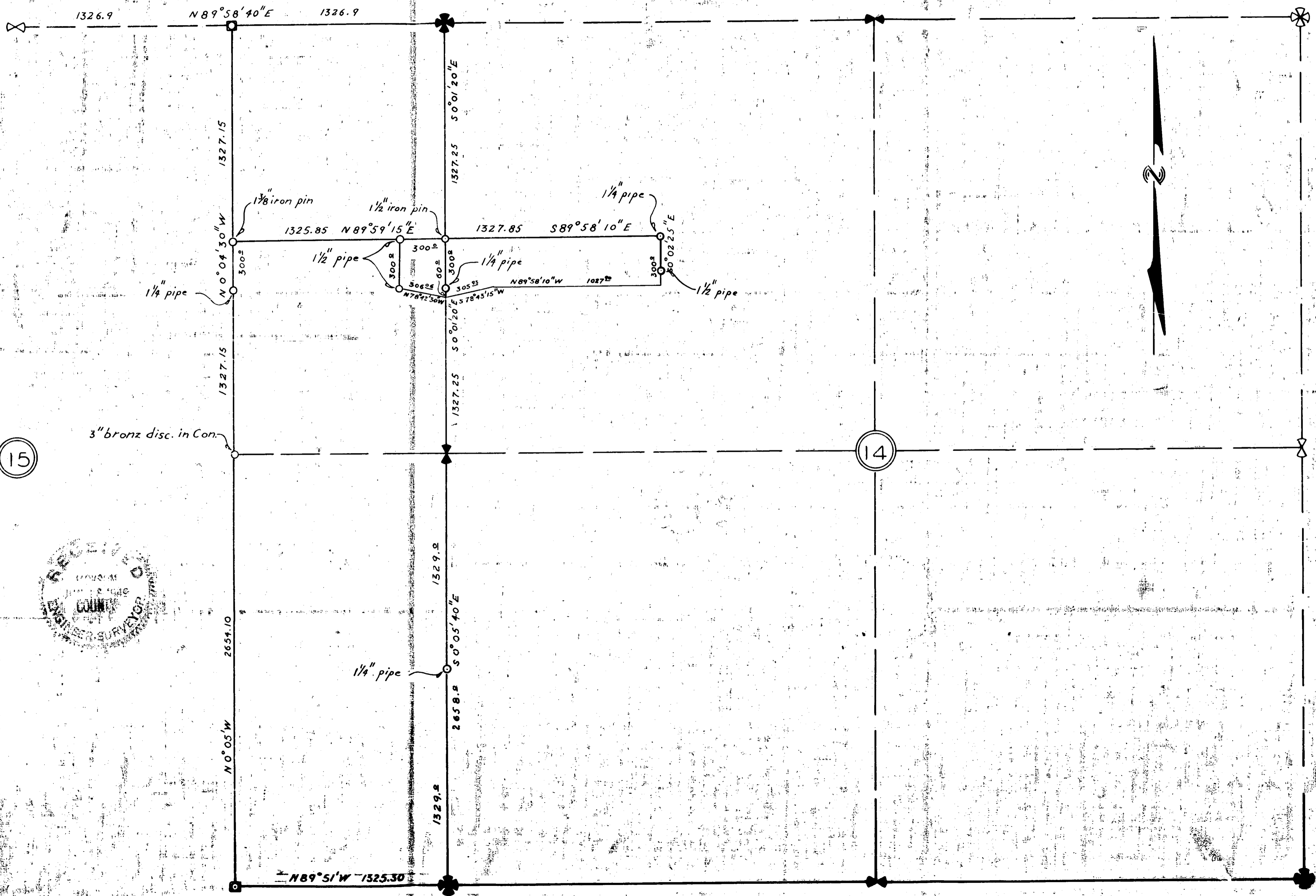
LOCATED IN SECTION 14 & 15 TWP. 36 SOUTH, RANGE 1 WEST, W.M.  
MARCH & ARRIL, 1949

SCALE 1 IN. = 400 FT.

REGISTERED  
OREGON  
LAND SURVEYOR

*C. Z. Boyden*

MARCH 10, 1944  
C. Z. BOYDEN  
7



15

14



T. 36 S. R. 1 W.

June 14 1945

Survey Narrative No. 169

For: A. T. Wattenberg and E. M. Hays

Purpose of Survey: To prepare property description for land to be transferred.

Began at a concrete monument with a 3" bronze disc set by U. S. Army Engineers for the East 1/16 corner between Sections 10 and 15, Township 36 South, Range 1 West and ran N. 89° 58' 40" E. 1326.9 feet to a concrete monument with 2" bronze disc set for the corner to Sections 10, 11, 14, and 15, Township 36 South, Range 1 West; then ran S. 0° 01' 20" E. 2654.5 feet to a concrete monument with 2" bronze disc for the 1/4 corner between Sections 14 and 15; continues S. 0° 05' 40" E. 2658.0 feet to a concrete monument with a 2" bronze disc for the corner to Sections 14, 15, 22, and 23, Township 36 South, Range 1 West; then by proportion established the North and South 1/16 corners between Sections 14 and 15.

REGISTERED  
OREGON  
LAND SURVEYOR

*C. Z. Boyden*

MARCH 10, 1944  
C. Z. BOYDEN

7

