

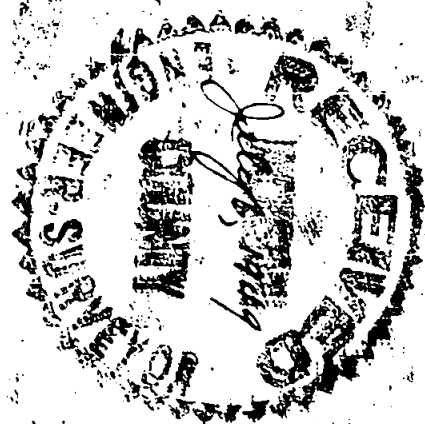
791

166

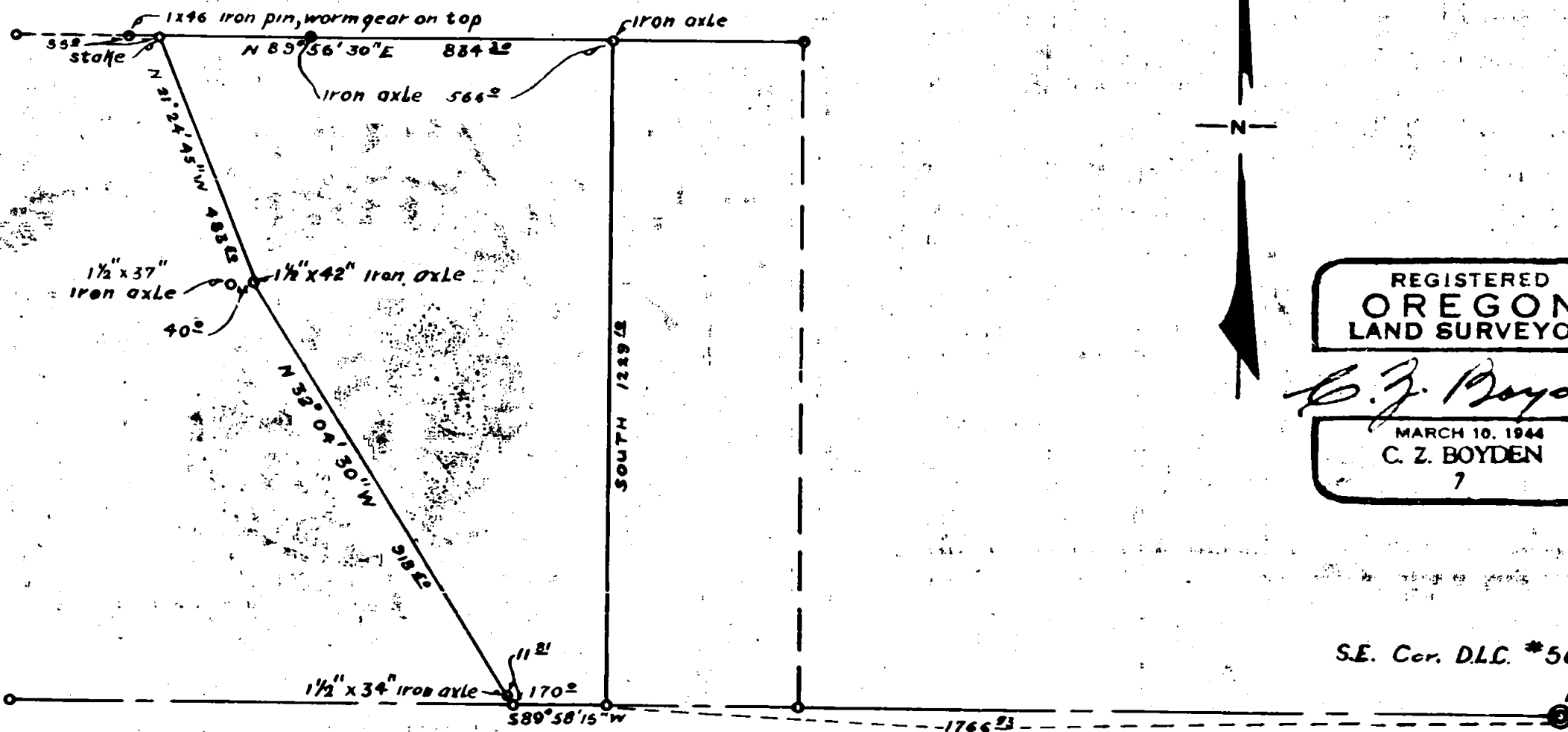
# B. M. LININGER

TWP 37S R2W

SURVEYED APRIL 1949 SCALE 1 IN. = 300 FT.



166



REGISTERED  
OREGON  
LAND SURVEYOR

*C. Z. Boyden*

MARCH 10, 1944  
C. Z. BOYDEN  
7

S.E. Cor. D.L.C. #56

166

166

166

Survey No. \_\_\_\_\_

For: B. M. Lininger

Purpose of Survey: To establish the boundaries of a tract to be transferred from Hare to Lininger.

Began at a 1½" iron axle previously set to be on the South boundary of D.L.C. No. 56, Township 37 South, Range 2 West, W.M. and S. 89° 58' 15" W. 1766.93 feet from the S.E. corner of said D.I.C. No. 56. Said beginning point being the S.W. corner of the B. M. Lininger property. From this axle, ran S. 89° 58' 15" W. along the D.L.C. line 170.0 feet; thence N. 32° 04' 30" W. 11.81 feet and set a 1½" iron axle for a reference corner. Continued N. 32° 04' 30" W. a total of 918.5 feet to a point on the West bank of Bear Creek from which a 1½" axle for reference corner bears West 40.0 feet; thence N. 21° 24' 45" W. 483.5 to a point on the West water's edge of Bear Creek and on the North boundary of the Hare property (from said point set a 1" iron pin S. 89° 56' 30" W. 55.0 feet for a reference corner.); thence N. 89° 56' 30" E. 268.2 and set a 1½" axle for a point on line; continued N. 89° 56' 30" E. 566.0 to a point previously set for B. M. Lininger's N.W. corner being North 1229.10 feet from the point of beginning.

Monuments were set as shown on map to accompany this report.

REGISTERED  
 OREGON  
 LAND SURVEYOR

*C. Z. Boyden*

MARCH 10, 1944  
 C. Z. BOYDEN  
 7

REGISTERED  
 OREGON  
 LAND SURVEYOR  
 July 6, 1949  
 UNIT