

TIMBER PRODUCTS CO.

Sec. 6 T35S, R4W. W.M. 2

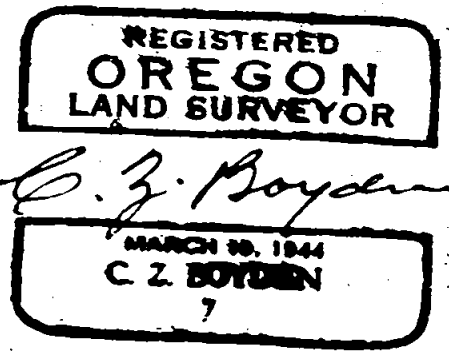
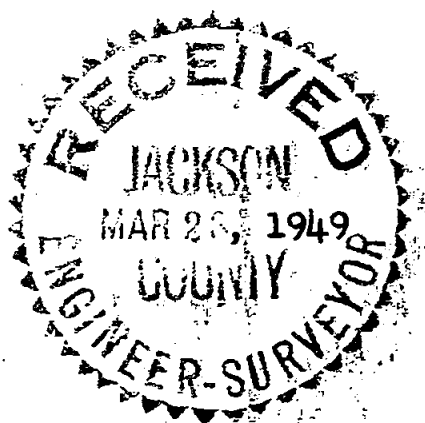
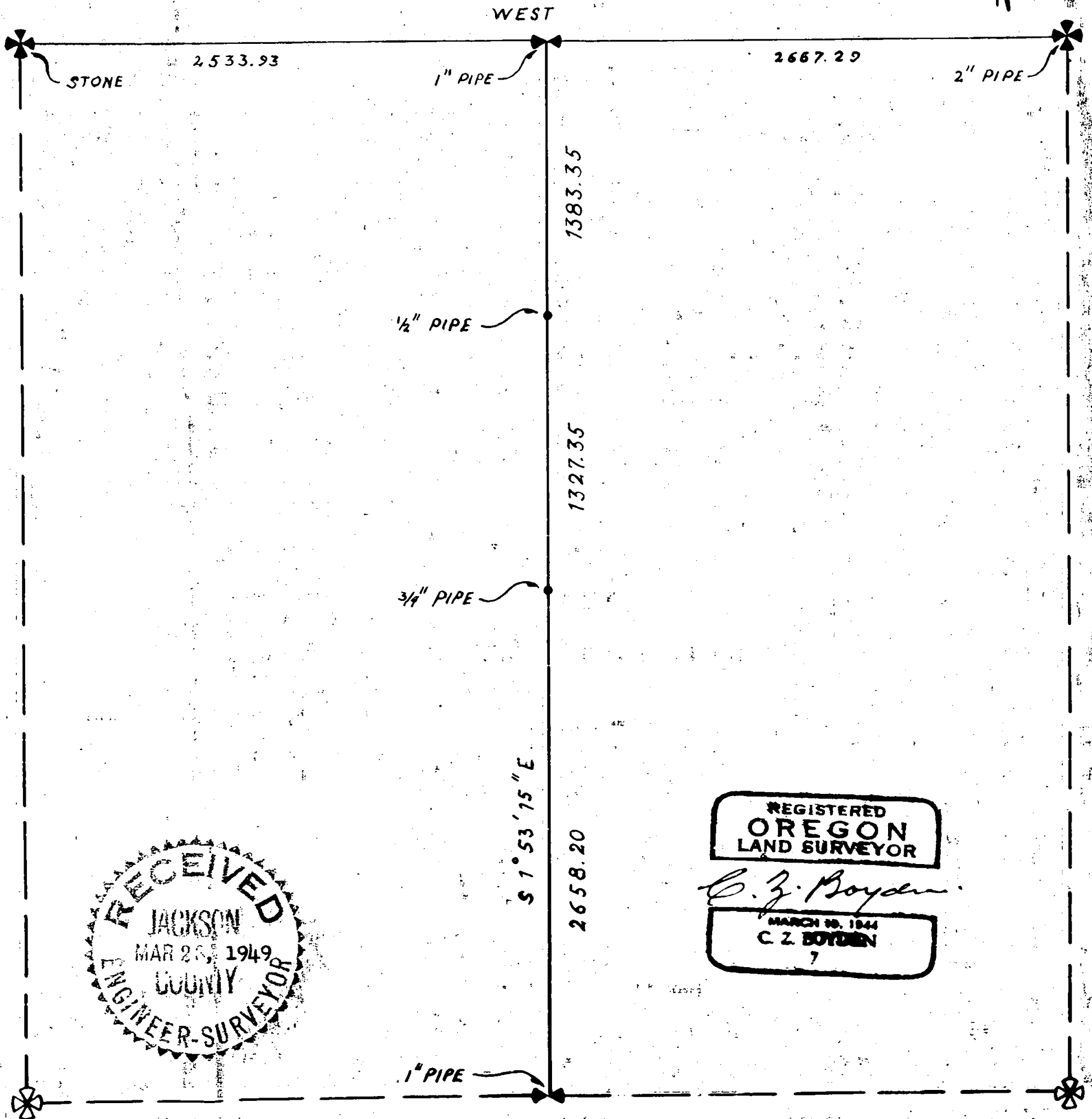
Surveyed. Mar. 2 to 11, '49

Survey to establish North & South Center Line of Section 6. Meridian established from government record North boundary Section 6. Mag. Var. N 20 1/2° E



135

SCALE 1" = 600'



135

Survey No. _____ for Timber Products Company.

Purpose of Survey: To establish the north and south center line of Section 6, Township 35 South, Range 4 West, W.M.

Commenced at the officially re-established corner to Sections 5 and 6, Township 35 South, Range 4 West and Sections 31 and 32, Township 34 South, Range 4 West and ran west in search of the 1/4 section corner on the north boundary of said Section 6. Found no evidence of the original corner and continued west to the officially re-established northwest corner of Section 6, being the township corner to Townships 34 and 35 South, Ranges 4 and 5 West. By single proportion distance on line between the northeast and northwest corners to Section 6, established the North 1/4 corner and ran south to the 1/4 Section corner between Sections 6 and 7, Township 35 South, Range 4 West, where both original bearing trees are still in tact. Then established two points on the true north and south center line of Section 6 as shown on the map to accompany this report.

Meridian control was taken from Government Record for the North boundary of Section 6.

REGISTERED
OREGON
LAND SURVEYOR

C. Z. Boyden

MARCH 10, 1944
C. Z. BOYDEN
7

RECEIVED
JACKSON
MAR 28, 1942
COUNTY
ENGINEER-SURVEYOR