

K.W. PELLET  
LOT N°2, BLK. N°15 ORIG. TOWN  
CENTRAL POINT.

SURV. FEB. 9, 1949

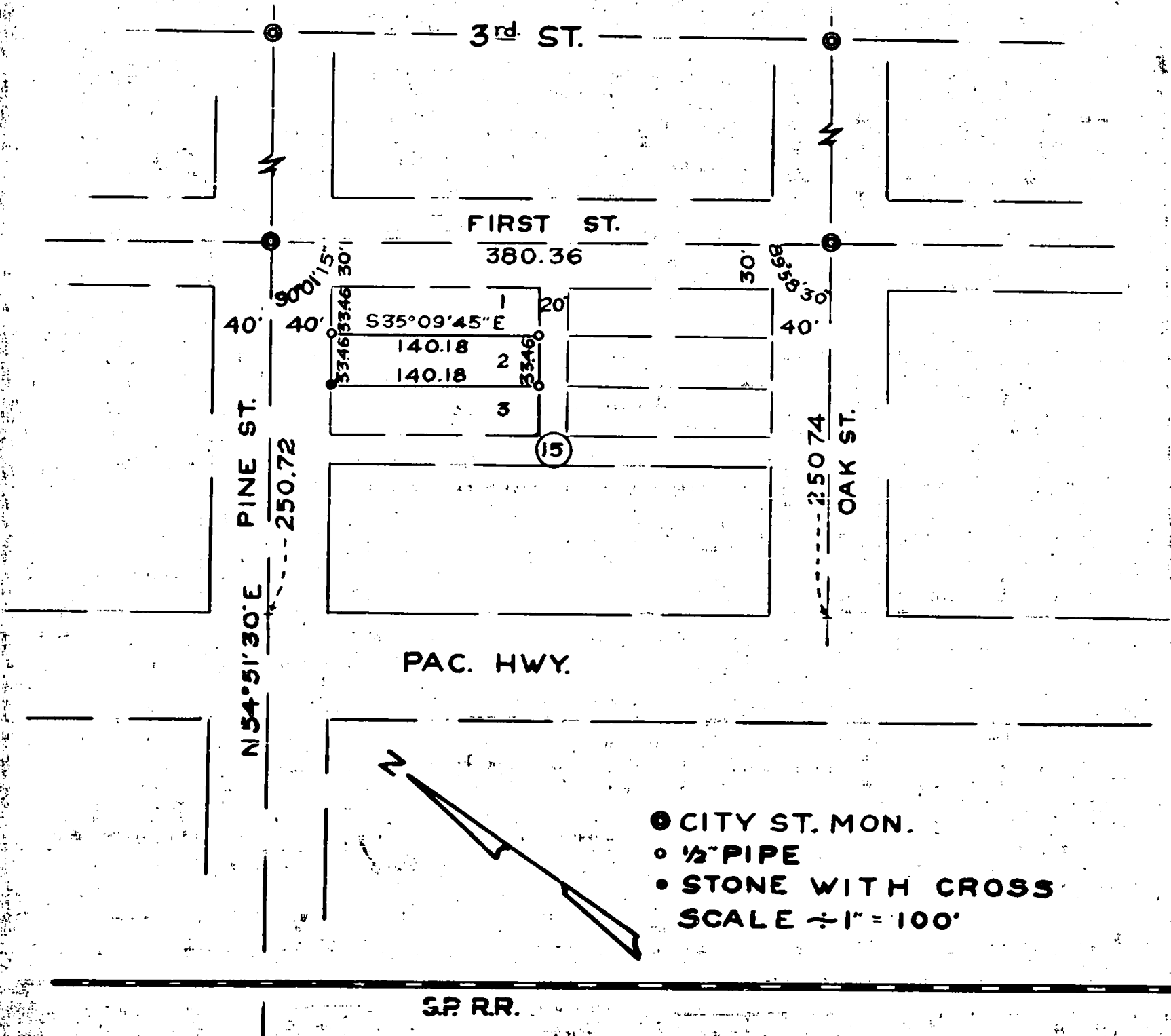
134

REGISTERED  
OREGON  
LAND SURVEYOR

*C. Z. Boyden*

MARCH 10, 1944  
C. Z. BOYDEN  
7

MAR 28 1944  
CLATSOP COUNTY



- CITY ST. MON.
  - 1/2" PIPE
  - STONE WITH CROSS
- SCALE ÷ 1" = 100'

SP RR.

Survey No. 134 for K. W. Pellet

Purpose of Survey: To determine and monument the boundaries of Lot No. 2 Block No. 15, of the Original Town (now City of Central Point, Oregon.)

Projected the center line of Pine Street from the intersection of Pine and First Streets to an intersection with the Easterly line of Front Street (now Pacific Highway) by using the center line monuments of Pine Street for control. Then by the same procedure, projected the center line of Oak Street to an intersection with the said Easterly line of Front Street or Pacific Highway. Then determined the courses and distances of the boundaries of Block No. 15 and computed the area of properties within the said block No. 15 and by direct proportion between measured and record distances, determined the boundaries of Lot No. 2 of said block and monumented same accordingly as shown on map to accompany this report.

At the West corner of said lot found the remains of an old cedar stake and a 10" x 12" x ? sand stone which agree with the lot corner as determined by this survey. Scribed cross on said stone for corner. Lead slugs with center punch marks were set in the concrete sidewalk on Pine Street on a 1.0 foot extension of the lot lines into Pine Street. Set pipe monuments stamped with a No. 7 at the other three corners. Also found a 1 1/4" pipe 0.47 feet Northeasterly from the North corner of said Lot.

February 9, 1949

REGISTERED  
OREGON  
LAND SURVEYOR

*C. Z. Boyden*

MARCH 10, 1944  
C. Z. BOYDEN  
7

RECEIVED  
MAY 28 1949  
COUNTY  
ENGINEER-SURVEYOR