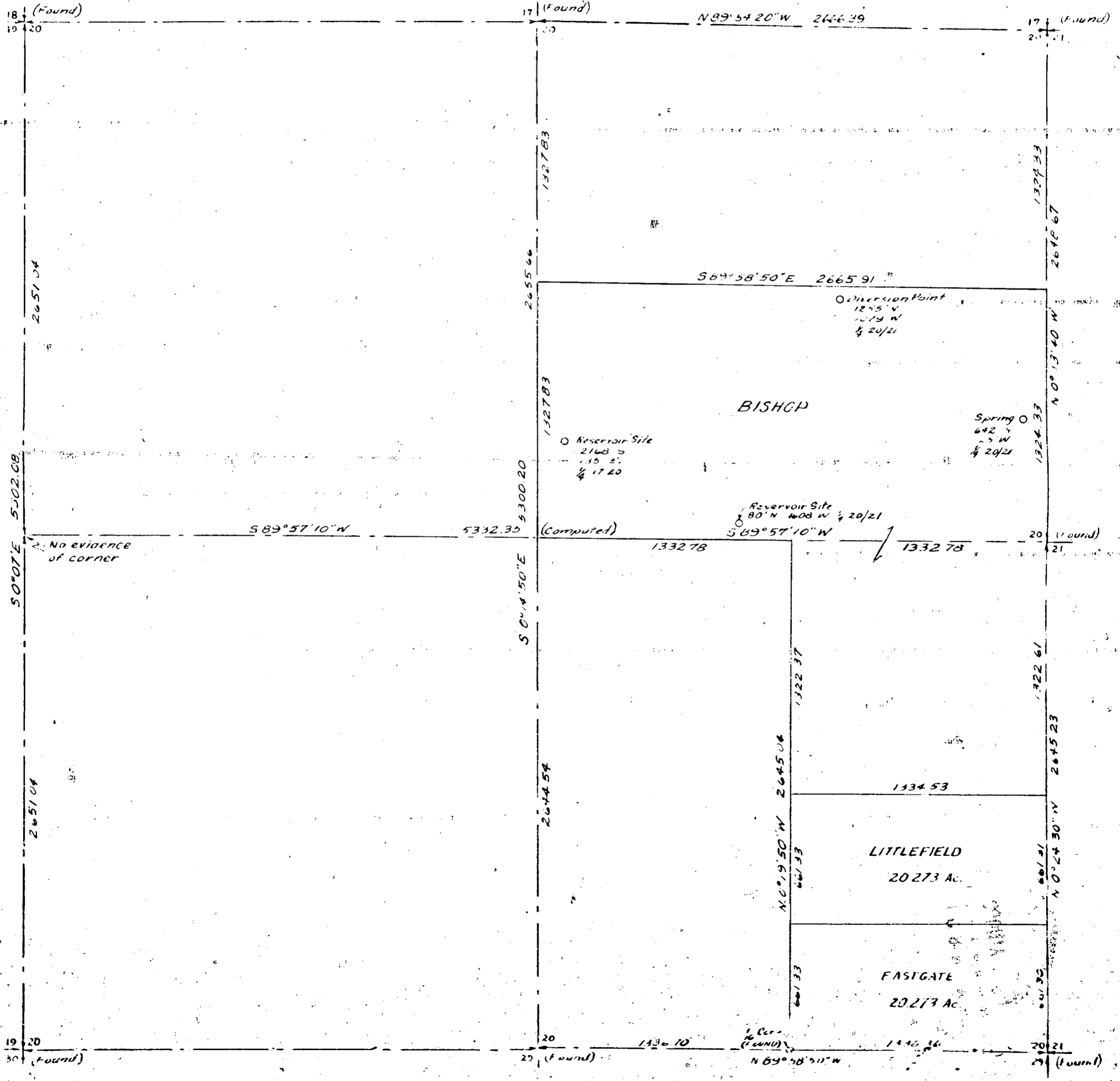
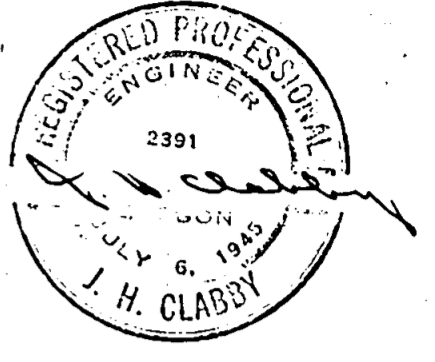


SUBDIVISION OF  
Sec. 20, T.34S, R.1W, W.M.

Scale: 1" = 500'      October 9, 1948

J.H. Clabby  
Consulting Engineer



Survey For: William Bishop, A. A. Eastgate and T. M. Littlefield  
Section 20, Township 34 South, Range 1 West, Willamette Meridian  
Jackson County, Oregon.

Purpose of Survey:  
To locate corners and boundaries of tracts held by above listed  
owners.

Survey Procedure:

Ran traverse from Southeast corner of said Section 20 (found),  
said township and range, connecting the East 1/16 corner between  
sections 20 and 29 (found), the re-established Quarter corner  
between Sections 20 and 29, and the Southwest corner of Section  
20 (found). Also ran traverse North from Southeast corner, Section  
20 connecting the re-established Quarter corner between Sections  
20 and 21 and the Northeast corner of Section 20 (found), thence  
ran traverse West to the Quarter corner between Sections 17 and  
20 (found) and to the Northwest corner Section 20 (found). No  
evidence of Quarter corner between Sections 19 and 20 found.

Its computed location is as shown on accompanying plat.

Thence proceeded to subdivide the Southeast Quarter and the Northeast  
Quarter of said Section 20 as shown on plat. All bearings derived  
from solar observations. All distances and bearings are shown on  
accompanying plat.

J. H. Clabby

October 1948

