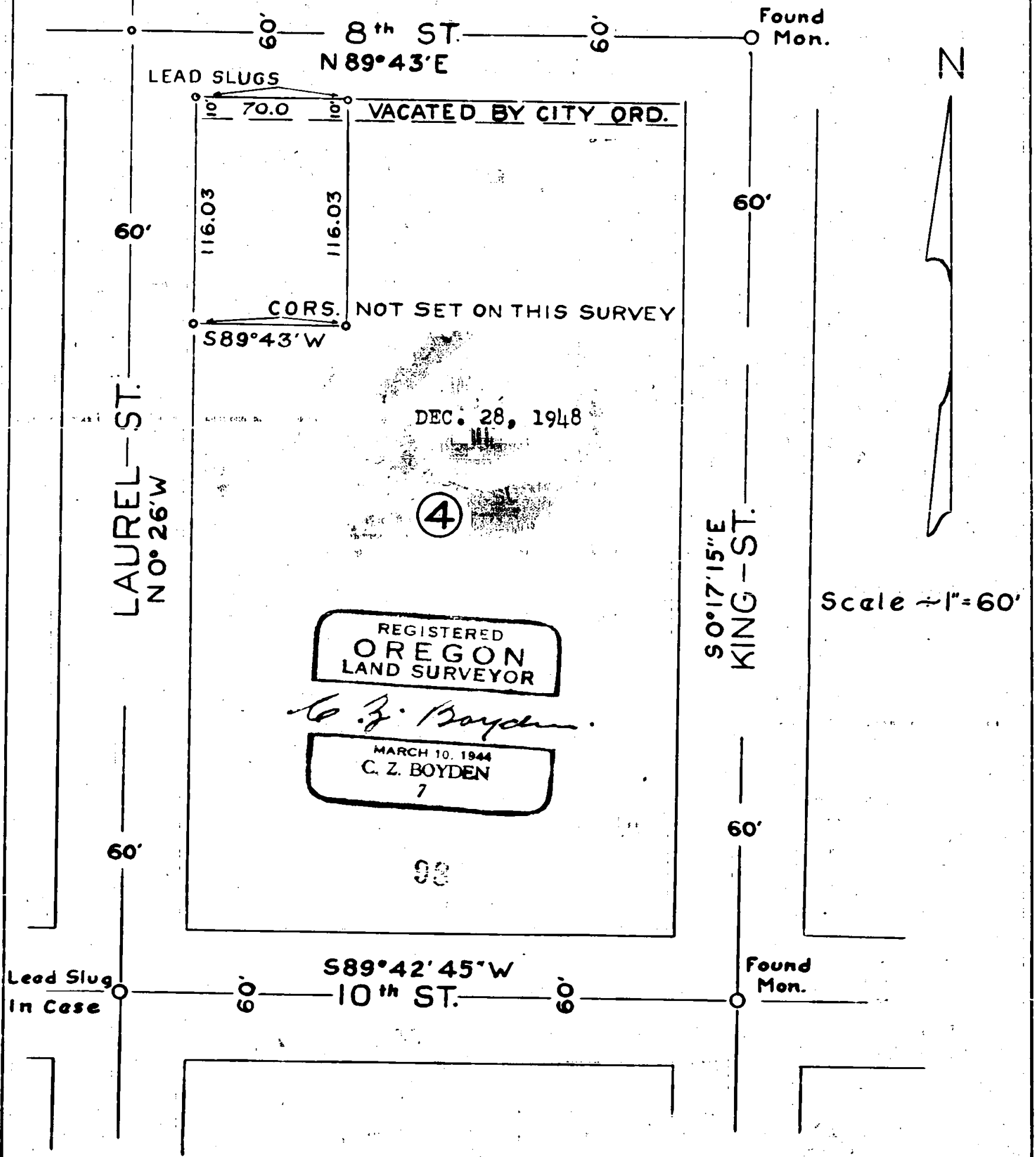


HARRIET E. MERRITT  
PART OF BLOCK N<sup>o</sup> 4 GALLOWAY'S ADD.  
S.E. 1/4 SEC. 25, T37S R2W, WM  
SURVEYED SEPT. 13, 1948



Medford

Survey No. 98 for Harriet E. Merritt.

Purpose of Survey: To establish the boundaries of the property described in Jackson County Deed Records, Volume 263, Page 160.

After determining the center lines of the streets involved, from the brass slug set in concrete for the center lines of King and 8th Street as established by the Medford City Engineer; run S. 0° 17' 15" E. 438.06 to the center line of 10th and found center punch mark in lead filled iron pipe; run S. 89° 42' 45" W. on the center line of 10th Street for a distance of 286.69 feet to the center line of Laurel Street and set a lead slug in concrete; run N. 0° 26' 00" W. 448.11 feet to the center line of 8th Street (no monument found); run N. 89° 43' E. along the center line of 8th Street 287.83 feet to the said brass slug at 8th and King Streets, which gives the following comparisons with the record boundary of Block 4, Galloway's Addition with the additional 10 feet along the North boundary as per City Ordinance No. 82:

*6313.*  
*448.06*

Laurel Street boundary measures	388.11 feet,	record	388.00
8th	" "	" "	227.75
King	" "	" "	388.07
10th	" "	" "	226.77

At the intersection of the boundaries of Laurel and 8th Street, set a lead slug in the concrete sidewalk for the Northwest corner of the property described in the above mentioned Deed Record; run N. 89° 43' E. 70.0 feet to the Northeast corner; run S. 0° 23' 30" E. 116.03 feet (no corner monument set); run S. 89° 43' W. 69.91 feet (no corner monument set); run N. 0° 26' W. along the East boundary of Laurel Street 116.03 feet inclosing the proportion of the said deed record to the direct proportion to the entire block

REGISTERED  
OREGON  
LAND SURVEYOR

*C. Z. Boyden*

MARCH 10, 1944  
C. Z. BOYDEN  
7

RECEIVED  
J. G. SMITH  
Dec 28 1948  
COUNTY  
ENGINEER-SURVEYOR