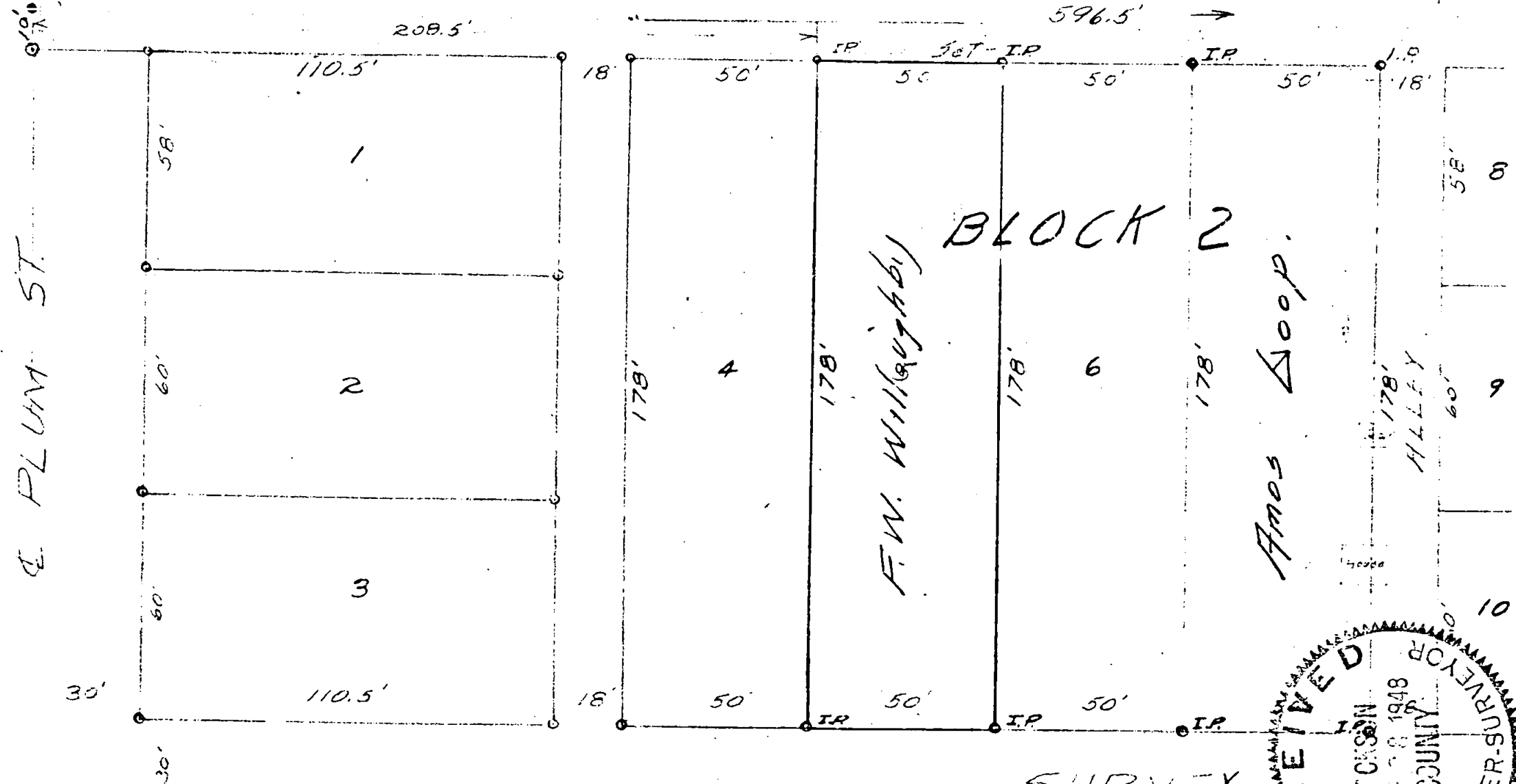


300
Found Monument
N. 1/4 Sec. 36 T. 12 N. R. 12 W. 1947
on PL 1947

57

PRUNE ST
at Plum St.



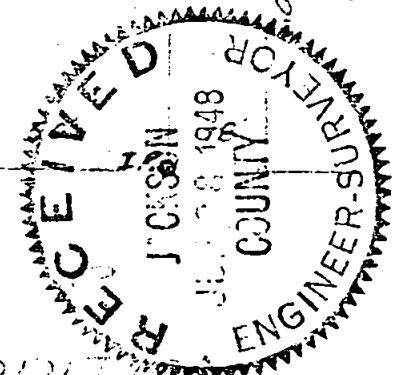
BLOCK 2

F.W. Willoughby

Amos Coop.

ALLEY

WITHINGTON ST.



SURVEY
LOT No. 5
Block 2
ROSE PARK ADDITION
CITY OF MEDFORD OREGON
Frank W. Willoughby

Scale 1" = 40' High L. Engle
May 1948 Civil Engineer

57

57

NARRATIVE REPORT
 Survey of Lots 5 and 7
 Block 2
 ROSE PARK ADDITION
 City of Medford.
 May 29, 1948

This survey was made for the purpose of establishing Lot corners for Lots 5 and 7 of Block 2, Rose Park Addition to the City of Medford, Oregon.

Procedure.

Beginning at a monument recognized as the intersection point of the center lines of Prune and Plum Streets, and using the relative position of that monument by distance and bearing from the Northeast Corner of Lot 7 Block 2 of Nickels Addition, to the dedicated boundary of Rose Park Addition.

Set up on the monument at the center lines of Prune and Plum Streets, back-sight to monument on center line of Prune Street at Jeanette Street.

Turned $89^{\circ} 57'$ left from backsight and measured 165.7 feet along center line of Plum Street in accordance with Record plat of Rose Park Addition and set point on line with North boundary of Block 2, Rose Park Addition. Turned angle $89^{\circ} 57'$ right from backsight on monument and set point for Northwest corner of Lot 5 at distance 208.5 feet and for Northwest corner of Lot 7 at distance of 308.5 feet and set other lot corners in accordance with record plat angles and distances.

