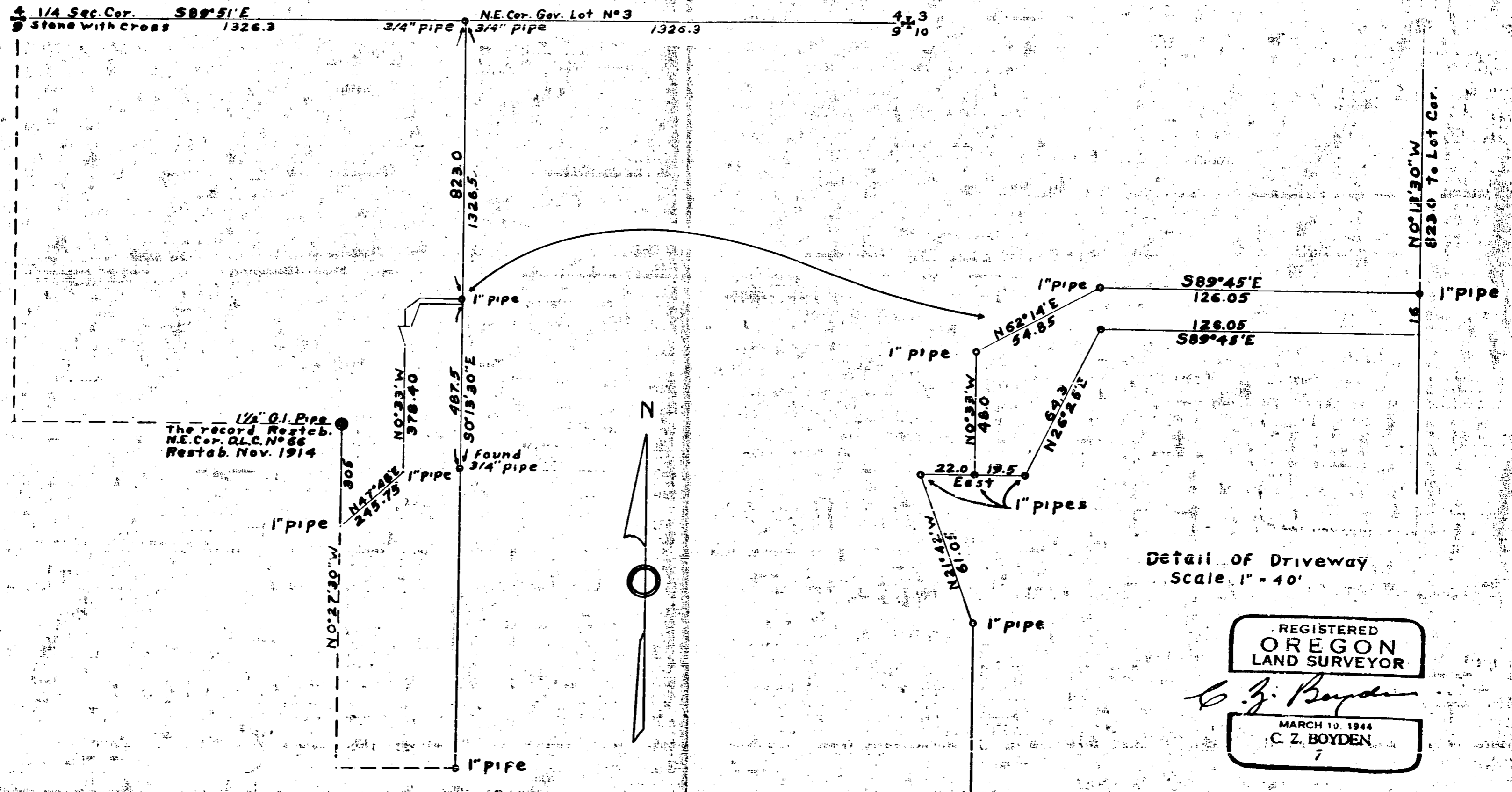


04

WILTON WHITE
Property Located in Sec. 9 T37 S1W
Surveyed July, 1947 Sale 1" = 300'

JUN 7 1948

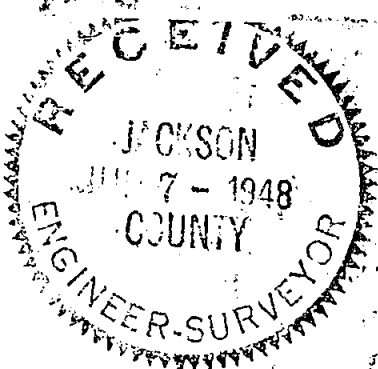


Detail of Driveway
Scale 1" = 40'

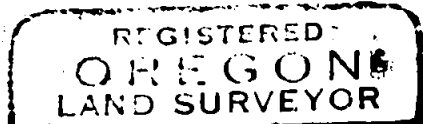
REGISTERED
OREGON
LAND SURVEYOR

C. Z. Boyden

MARCH 10, 1944
C. Z. BOYDEN
7



04



C. Z. Boyden
MARCH 10, 1944
C. Z. BOYDEN
7

WILTON WHITE SURVEY

In Section 9, Township 37 South, Range 1 West, Willamette Meridian.

Beginning at the corner to sections 3, 4, 9, and 10 where I find the 2" iron pipe for corner, also the witness trees as described in the official reestablished corner records for Jackson County as established May 6, 1941, run thence N. 89°-51' W. along the true section line for 2652.6 feet to the $\frac{1}{4}$ section corner to sections 4 and 9 marked by 4" x 6" sand stone with X on top. Also found references as described in the official reestablished corner record as established November 10, 1914.

At the mid-point between the section corners and the $\frac{1}{4}$ corner sections 4 and 9, set a $\frac{3}{4}$ " x 31" galvanized iron pipe for Northeast Government Lot No. 3.

From the Northeast corner of Government Lot No. 3, run S. 0°-13'-30" E. 1326.5 feet where I found a $\frac{3}{4}$ " iron pipe to mark the Northeast $\frac{1}{16}$ section corner which has been the recognized corner for over 30 years.

Set a 1" x 45" iron pipe S. 0°-13'-30" E. 823.0 feet from the said Northeast corner Government Lot No. 3; thence running N. 89°-45' W. 126.05 setting 1" pipe monuments and continue to establish the division line between the properties and boundary of the mutual driveway. Setting iron monument terminating at the Northeast corner of D.L.C. No. 66 as shown on the accompanying map, at which D.L.C. corner I set a $1\frac{1}{2}$ " x 33" iron pipe for corner from the official re-established corner records as established November 10, 1914.

Surveyed July 1947